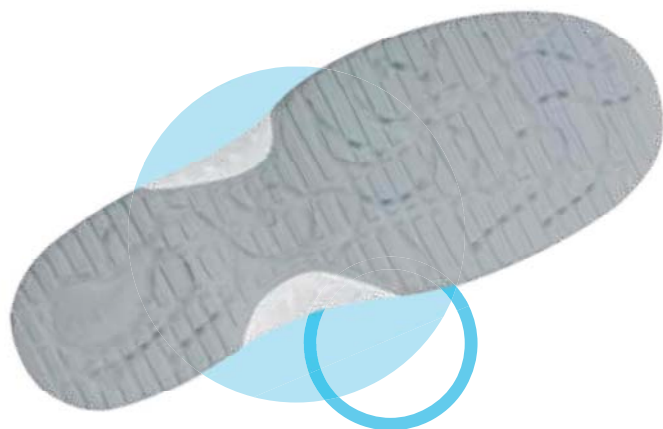


uni6

technoLASA



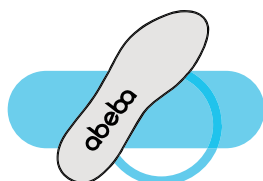


Outsole

- SRC slip resistance according to EN ISO 20345
- TPU outsole, abrasion resistant
- Resistant to fuel
- Flexing zones walking comfort

Insole

- replaceable Active Comfort insole (art. 352520), more information on page 122
- Suitable for orthopedic insoles



Infobox

- low shoe
- ESD
- FITTING - normal
- Available from size 35 - 48 (according to models)
- Soft PU midsole



Shoelaces

- Set in 3 colours (red, blue and green), length 80 cm for low shoes, suitable for all low lace-up shoes
- art. 370118



Technology

- Antistatic/ESD dissipative according to EN 61340-4-3 and EN 61340-5-1




S1 1795 **S1**  31795

CE, EN ISO 20345 S1, SRC

- size 35-48 • microfibre white • lining microfibre, breathable, moisture absorbing • replaceable Active Comfort insole (art. 352520) • slip-resistant TPU outsole



S2 1766 **S2**  31766

CE, EN ISO 20345 S2, SRC

- size 35-43 • microfibre white with coloured lacing • lining with silver ions • replaceable Active Comfort insole (art. 352520) • slip-resistant TPU outsole • incl. white exchange laces



S1  31721

CE, EN ISO 20345 S1, SRC

- size 35-48 • velour black with **breathable textile inlays** • lining with silver ions • replaceable Active Comfort insole (art. 352520) • slip-resistant TPU outsole




S2 1751 **S2**  31751

CE, EN ISO 20345 S2, SRC

- size 35-48 • smooth leather black • lining microfibre, breathable, moisture absorbing • replaceable Active Comfort insole (art. 352520) • slip-resistant TPU outsole




S3 1629 **S3**  31629

CE, EN ISO 20345 S3, SRC

- size 35-48 • microfibre-textile white with pattern, microfibre-textile black with pattern • water-repellent • lining with silver ions • replaceable Active Comfort insole (art. 352520) • metal free penetration resistance • slip-resistant TPU outsole



S3 1628 **S3**  31628

also
available as
S3



S2 1741

S2 31741

S3 1641

S3 31641



S2 1740

S2 31740

CE, EN ISO 20345 S2 / S3, SRC

• size 35-48 • microfibre black, microfibre white • lining with silver ions • instep area with elastic band • replaceable Active Comfort insole (art. 352520) • slip-resistant TPU outsole



micro

KNITTED TEXTILE

Lightweight, stain-resistant, water repellent and dimensionally stable, washable at 30°C, it is perfectly suited to the constraints of catering.



STEEL TOE CAP

Robust material, extremely resistant to impact and compression.



LACES FASTENING

Optimal and individual adaptation to the foot. A well-fitting shoe reduces the risk of falls and accidents.

MICROFIBRE LINING

Moisture-absorbing, for optimum comfort. Free of toxic substances, breathable, antimicrobial, anti-odour and tear resistant. Certified according to the strict test procedure „Standard 100 by OEKO-TEX“.

„ACTIVE COMFORT“ INSOLE

Replaceable, with activated carbon, good cushioning, absorbs moisture and wicks it away.



art.
1676

TPU OUTSOLE

SRC - slip-resistance and cushioning. Profile design with flex zones for high walking comfort. Particularly suitable on surfaces such as tiles and hall floors. Safe stance even on wet surfaces.

METAL FREE ANTIPUNCTURE MIDSOLE

Puncture resistant and water resistant. Prevents the penetration of external objects.



S3

ORTHOPAEDIC INSOLE POSSIBLE

If customised orthopaedic insoles are required, Abeba shoes remain certified.



S2 1775

S2  31775



• incl. blue laces

S2 1774

S2  31774



S2 1773

S2  31773



S2 1772

S2  31772



S3 1676

S3  31676

CE, EN ISO 20345 S2 / S3, SRC

- size 35-48 • knitted textile anthracite, orange, blue, white, black • protection against splash water
- lining with silver ions • replaceable Active Comfort insole (art. 352520) • slip-resistant TPU outsole







S1 1760

S1  31760



S2 1761

S2  31761



S1  31762



S1  31763

S3 1765

S3  31765

CE, EN ISO 20345 S1 / S2 / S3, SRC

• size 35-48 • functional leather with honeycomb pattern black, white, black/white, blue und functional leather navy blue • water-repellent • scratch-resistant • lining with silver ions • replaceable Active Comfort insole (art. 352520) • metal free penetration resistance as S3 • slip-resistant TPU outsole



S2 1780

S2  31780



S2 1781

S2  31781



S2 1786

S2  31786

S2 1787

S2  31787

CE, EN ISO 20345 S2, SRC

• size 35-48 • microfibre white/black, white, black, white/blue • lining with silver ions • replaceable Active Comfort insole (art. 352520) • slip-resistant TPU outsole



Product example:

**art. 1780
with blue
shoelaces**

**Shoelaces Set
art. 370118,
more information
on page 123**

